

Darien Police Department

Monthly Report

August 2021



Student Safety

As students return to school we want to remind parents that providing alcohol to minors and hosting parties is against the law and sends a dangerous message to teens about alcohol use. Social hosting in DuPage County has long been a problem. According to the 2020 Illinois Youth Survey 44% of DuPage County 12th graders who self-report using alcohol advise they obtained that alcohol from their parents with parent permission. An additional 29% of DuPage County 12th graders report obtaining alcohol from someone else's parent with that parent's permission.

School Bus

The school year is fast approaching. A reminder that it is a violation to pass a stopped school bus. Anytime a bus is stopped with flashing red lights / stop sign it is illegal to pass whether on the roadway or private property when children are actively loading or unloading.

Tornado Safety

Tornado watch or warning, there is a difference. A tornado watch is issued for broad areas where conditions exist for the development of a tornado. A tornado warning is issued for areas where a tornado is imminent or detected on radar. Watches, commonly issued a few hours before a storm could hit, are meant to alert the public of a developing threat. Warnings are often issued minutes before a tornado hits. They are urgent calls to seek shelter immediately.

On June 21st Darien neighborhoods were hit by a tornado. Fortunately no injuries were reported. There was a few homes that received significant damage and others that had minor damage. A number of trees were broken or uprooted. Many power lines were down and power out for many residents. As bad as it was it could have been worse. The response of the public to take shelter is appreciated.

A few things of importance that I think many people do not realize is that sirens are for those people outside. Though sirens are loud enough for many people indoors to hear, that is not their intended purpose. When the tornado sirens alert you really don't have a lot of time as storms are unpredictable and change quickly, so move to a place of safety.

Inside your home or business rely on a tornado warning from a weather radio, television, cell phone, etc. not on the sirens. Sirens may not be loud enough to be heard when the windows are closed and the noise of the storm is loud. The warnings received on radio, television, phone, etc. are going to provide more detail.

On August 9th tornado sirens were sounded. Many people in our area saw clear skies. If the location of the storm is in DuPage and large enough to cover a significant portion of the county a siren will be sounded for the county. If the location of the storm is predominately south or north the sirens being sounded will be more localized.

There is no all clear siren. Please continue to monitor the storm via a weather radio, cell phone or television. If you happen to hear a second siren it is because of a different event generally a different storm center is moving into the area.

Crime Alert – Stolen Motor Vehicle

We are experiencing an increase in stolen motor vehicles recently. The most common type of vehicles that have been stolen, or attempted are Dodge Charger’s, Challenger’s, Durango’s and Jeep Cherokee’s. It appears as if the offenders are using sophisticated equipment and do not need a key to operate the vehicle. The best deterrent for this is to park these vehicles inside your garage. It is also helpful to have security lighting and cameras.

If you have information that is related to crimes that have occurred, you can e-mail the Investigations Division with a crime tip at crimetips@darienil.gov or you can leave a message at 630-353-8150.

Citizen Complaints

This is a listing of complaints that have been submitted to the police department from residents. The chart details the complaint and our response.

<u>Location</u>	<u>Issue</u>	<u>Dates Monitored</u>	<u>Police Response</u>
6800 Block of Richmond	Speeding Rush Hours	01/28/21 - 02/12/21	12 Observations / 337 Minutes 0 Warnings / 0 Citations 0.0 Per Hour
75th Street in front of Eisenhower	Speeding Drop Off & Pick Up	02/05/21 – 02/26/21	16 Observations / 233 Minutes 8 Warnings / 1 Citation 2.3 Per Hour
2233 Green Valley Rd	Parking over the Sidewalk Throughout the Day	03/10/21 – 03/24/21	24 Observations / 72 Minutes 0 Warnings / 1 Citations 0.8 Per Hour
1300 to 1500 block of Darien Club Drive	Speeding Throughout the Day	03/16/21 – 03/31/21	30 Observations / 600 Minutes 4 Warnings / 1 Citation 0.5 Per Hour
Beller/Ailsworth	Speeding & Stop Sign Violations Throughout the Day	04/02/21 – 04/12/21	22 Observations / 531 Minutes 7 Warnings / 1 Citation 0.9 Per Hour
Jewel - Northwest corner of parking lot	Loud Noise, Speeding, Littering Between 7:00 - 11:00pm	04/07/21 – 04/21/21	25 Observations / 394 Minutes 0 Warnings / 0 Citations 0.0 Per Hour
Hinsbrook Park (Beachnut / Ironwood)	Parking Restrictions Game Time	04/16/21 – 04/25/21	13 Observations / 57 Minutes 5 Warnings / 0 Citations 5.3 Per Hour
Wilmette / 69th	Speeding Between 8:15-8:35am & 1:30-1:55pm	04/16/21 – 04/30/21	14 Observations / 301 Minutes 3 Warnings / 1 Citation 0.8 Per Hour
Clarendon Hills Rd between 67th & Plainfield Rd	Speeding Not During Rush Hour	04/28/21 – 05/12/21	26 Observations / 552 Minutes 13 Warnings / 2 Citations 1.6 Per Hour

71st Street from Fairview to Cass	Speeding 6:00-8:00am	05/10/21 – 05/24/21	18 Observations / 369 Minutes 5 Warnings / 1 Citations	1.0 Per Hour
8000 Block of Farmingdale	Parking Over the Sidewalk Throughout the Day	05/16/21 – 05/26/21	20 Observations / 94 Minutes 9 Warnings / 0 Citations	5.7 Per Hour
Oldfield Rd. & Myers Woods	Speeding Throughout Day	06/08/21 – 07/16/21	90 Observations / 4,144 Minutes 73 Warnings / 31 Citations	1.4 Per Hour
Nantucket Dr. from 75 th to 79 th Street	Speeding Throughout Day	06/02/21 – 06/16/21	22 Observations / 513 Minutes 3 Warnings / 1 Citation	0.5 Per Hour
Richmond 69 th to 70 th Street	Speed & Noise Throughout Day	06/10/21 – 06/25/21	230 Observations / 5,276 Minutes 89 Warnings / 35 Citations	1.4 Per Hour
Walnut & Warwick	Speeding & Stop Sign	06/08/21 – 06/22/21	27 Observations / 659 Minutes 6 Warnings / 1 Citation	0.6 Per Hour
67th Street from Cass Ave to Clarendon Hills Rd	Speeding Throughout the Day	03/09/21 – 07/31/21	292 Observations / 6,953 Minutes 118 Warnings / 43 Citations	1.4 Per Hour
Warwick Walnut to Janet	Speeding	07/24/21 – 08/01/21	6 Observations / 186 Minutes 0 Contacts	0.0 Per Hour
Lakeridge near Carlisle	Speeding	07/19/21 – 08/02/21	20 observations / 463 Minutes 0 Contacts	0.0 Per Hour

We believe that we should be problem solvers not just enforcers. Our hope is that there is voluntary compliance with laws and ordinances. Because we have voluntary compliance and people living in and visiting Darien have high concern for their fellow man they voluntarily abide by Illinois Statutes and Darien Ordinances. If we never issued a speeding ticket because everyone drove within the speed limit or never needed to issue a ticket for too tall of grass or a building in disrepair that would be great as it would mean that we had compliance with the law. Unfortunately voluntary compliance is not always the case and enforcement is necessary.

If you're bothered by something please contact the police department. We will investigate and try to resolve the situation. Absent voluntary compliance or workable alternative we will enforce the law.

The police and others in the City (e.g. zoning & property maintenance) work together to create an environment where we bring the resources of the City to resolve a situation. Countless times people have contacted myself or Dan Gombac with an issue. Where there is a need for the assistance from the other we have always helped in resolving a situation.

Calls for Service

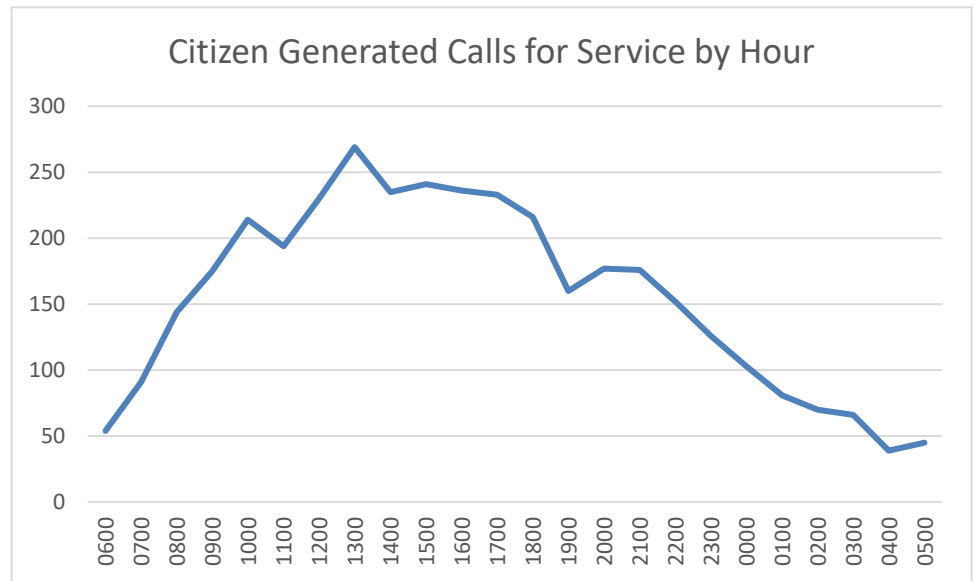
July 2021

	<u>Jul</u> <u>2021</u>	<u>Jul</u> <u>2020</u>	<u>Jul</u> <u>2016</u>	<u>Jul</u> <u>2012</u>	<u>1 Year</u> <u>Change</u>	<u>5 Year</u> <u>Change</u>	<u>9 Year</u> <u>Change</u>	<u>YTD</u> <u>2021</u>	<u>YTD</u> <u>2020</u>	<u>YTD</u> <u>2016</u>	<u>YTD</u> <u>2011</u>	<u>1 Year</u> <u>Change</u>	<u>5 Year</u> <u>Change</u>	<u>9 Year</u> <u>Change</u>
Citizen Generated	673	601	748	715	12.0%	-10.0%	-5.9%	3727	3425	4461	4211	8.8%	-16.5%	-11.5%
Officer Initiated	733	827	2075	1748	-11.4%	-64.7%	-58.1%	5258	3761	16261	12721	39.8%	-67.7%	-58.7%

There was a significant drop in calls for service during the first several months of COVID both in calls generated by the public and self-initiated calls by officers. Both citizen generated and officer initiated calls for service have increased in 2021 over 2020.

The chart depicting officer initiated activity is deceptive. In prior years officers would put themselves out on any type of activity. For example, when they drove through a parking lot of a strip mall they would put themselves out on focused or preventative patrol. The practice of placing oneself on a “preventative” call was stopped and considered a part of their “normal” activities. When an officer places him / herself out on an activity now it is because of a specific complaint.

Calls for service have remained constant for ten plus years. Each year shows generally the same type of graph shown here. Knowing this, when we discussed permanent shifts with the Union changes were made to the officers’ schedule so that manpower corresponds to workload.



Crime Summary

July 2021

Part 1 Offenses

	<u>Jul</u> <u>2021</u>	<u>Jul</u> <u>2020</u>	<u>Jul</u> <u>2016</u>	<u>Jul</u> <u>2011</u>	<u>1 Year</u> <u>Change</u>	<u>5 Year</u> <u>Change</u>	<u>10 Year</u> <u>Change</u>	<u>YTD</u> <u>2021</u>	<u>YTD</u> <u>2020</u>	<u>YTD</u> <u>2016</u>	<u>YTD</u> <u>2011</u>	<u>1 Year</u> <u>Change</u>	<u>5 Year</u> <u>Change</u>	<u>10 Year</u> <u>Change</u>
Murder	0	0	0	0	0.0%	0.0%	0.0%	0	0	0	1	0.0%	0.0%	-100.0%
Sexual Assault	1	1	0	1	0.0%	0.0%	0.0%	3	1	0	2	200.0%	0.0%	50.0%
Robbery	0	0	0	0	0.0%	0.0%	0.0%	0	4	0	3	-100.0%	0.0%	-100.0%
Assault & Battery	2	0	0	0	0.0%	0.0%	0.0%	4	3	1	2	33.3%	300.0%	100.0%
Violent Crime	3	1	0	1	200.0%	0.0%	200.0%	7	8	1	8	-12.5%	600.0%	-12.5%
Burglary	3	3	7	10	0.0%	-57.1%	-70.0%	11	22	26	38	-50.0%	-57.7%	-71.1%
Theft	16	37	38	37	-56.8%	-57.9%	-56.8%	85	127	137	184	-33.1%	-38.0%	-53.8%
Motor Vehicle Theft	3	1	1	5	200.0%	200.0%	-40.0%	7	4	5	11	75.0%	40.0%	-36.4%
Arson	0	0	1	0	0.0%	-100.0%	0.0%	0	0	1	0	0.0%	-100.0%	0.0%
Property Crime	22	41	47	52	-46.3%	-53.2%	-57.7%	103	153	169	233	-32.7%	-39.1%	-55.8%
Part One Crime	25	42	47	53	-40.5%	-46.8%	-52.8%	110	161	170	241	-31.7%	-35.3%	-54.4%

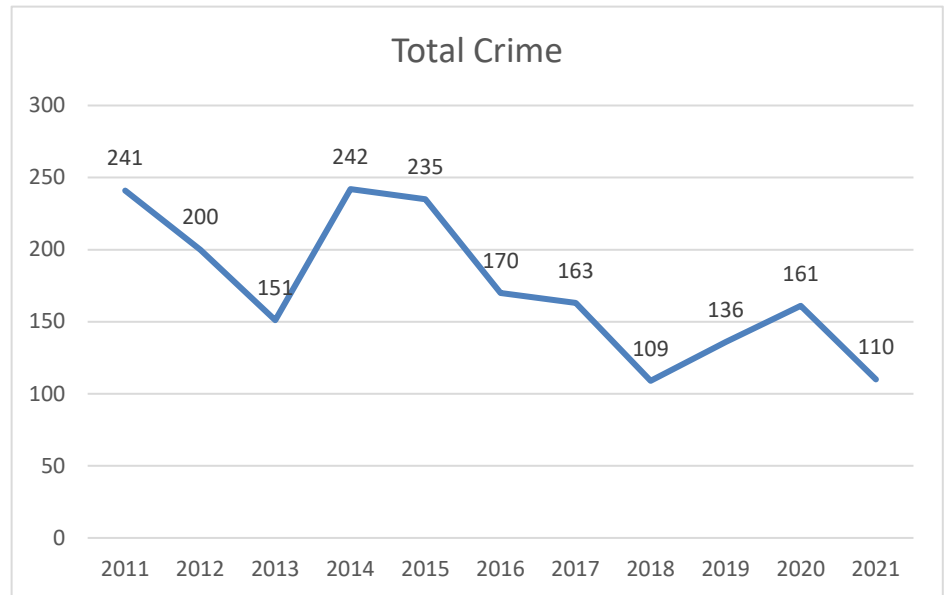
Part 2 Offenses

	<u>Jul</u> <u>2021</u>	<u>Jul</u> <u>2020</u>	<u>Jul</u> <u>2016</u>	<u>Jul</u> <u>2011</u>	<u>1 Year</u> <u>Change</u>	<u>5 Year</u> <u>Change</u>	<u>10 Year</u> <u>Change</u>	<u>YTD</u> <u>2021</u>	<u>YTD</u> <u>2020</u>	<u>YTD</u> <u>2016</u>	<u>YTD</u> <u>2011</u>	<u>1 Year</u> <u>Change</u>	<u>5 Year</u> <u>Change</u>	<u>10 Year</u> <u>Change</u>
Assault	0	0	0	0	0.0%	0.0%	0.0%	1	3	3	5	-66.7%	-66.7%	-80.0%
Battery	1	1	3	2	0.0%	-66.7%	-50.0%	9	11	20	26	-18.2%	-55.0%	-65.4%
Domestic Battery	4	1	5	3	300.0%	-20.0%	33.3%	20	26	37	30	-23.1%	-45.9%	-33.3%
Criminal Damage	1	1	1	11	0.0%	0.0%	-90.9%	23	21	14	35	9.5%	64.3%	-34.3%
Criminal Trespass	1	1	2	0	0.0%	-50.0%	0.0%	4	4	3	9	0.0%	33.3%	-55.6%
Disorderly Conduct	0	1	4	3	-100.0%	-100.0%	-100.0%	15	19	24	29	-21.1%	-37.5%	-48.3%

Some items of note regarding crime include drawing your attention to overall crime. Overall crime is violent crime and property crime as measured by the FBI added together. It is not all criminal acts. It is a consistent measure since the 1930's when the FBI first established the Uniform Crime Reports (UCR). It allows comparisons against other police departments, regions, changes over time, etc.

What does it mean for us in Darien? Look at the graph to the right. It's easy to see where crime is currently at within Darien. The trend has been downward over a period of time.

We were safe and we're getting safer. Your cooperation with reporting criminal acts, placing video cameras on your houses and places of business, your willingness to contact us when there is a problem before it goes too far, your desire to have a safe community and stand up as a witness has not gone unnoticed and is proven in the data when there is trust and respect by and for the police and the community.



Arrest Report

July 2021

Part One Offenses

	Jul 2021	Jul 2020	Jul 2016	Jul 2011	1 Year Change	5 Year Change	10 Year Change	YTD 2021	YTD 2020	YTD 2016	YTD 2011	1 Year Change	5 Year Change	10 Year Change
Murder	0	0	0	0	0.00%	0.00%	0.00%	0	0	0	0	0.00%	0.00%	0.00%
Sexual Assault	0	0	0	0	0.00%	0.00%	0.00%	0	0	0	0	0.00%	0.00%	0.00%
Robbery	0	0	0	0	0.00%	0.00%	0.00%	0	0	0	1	0.00%	0.00%	-100.00%
Assault & Battery	1	0	0	0	0.00%	0.00%	0.00%	1	0	1	4	0.00%	0.00%	-75.00%
Violent Crime	1	0	0	0	0.00%	0.00%	0.00%	1	0	1	5	0.00%	0.00%	-80.00%
Burglary	2	1	0	2	100.00%	0.00%	0.00%	3	5	0	2	-40.00%	0.00%	50.00%
Theft	2	2	7	2	0.00%	-71.43%	0.00%	12	14	40	27	-14.29%	-70.00%	-55.56%
Motor Vehicle Theft	0	1	0	0	-100.00%	0.00%	0.00%	0	2	0	0	-100.00%	0.00%	0.00%
Arson	0	0	0	0	0.00%	0.00%	0.00%	0	0	0	0	0.00%	0.00%	0.00%
Property Crime	4	4	7	4	0.00%	-42.86%	0.00%	15	21	40	29	-28.57%	-62.50%	-48.28%
Total Part One Crime	5	4	7	4	25.00%	-28.57%	25.00%	16	21	41	34	-23.81%	-60.98%	-52.94%

Part Two Offenses

	Jul 2021	Jul 2020	Jul 2016	Jul 2011	1 Year Change	5 Year Change	10 Year Change	YTD 2021	YTD 2020	YTD 2016	YTD 2011	1 Year Change	5 Year Change	10 Year Change
Assault	0	0	0	0	0.00%	0.00%	0.00%	0	0	0	1	0.00%	0.00%	-100.00%
Battery	0	0	0	0	0.00%	0.00%	0.00%	3	0	3	10	0.00%	0.00%	-70.00%
Domestic Battery	5	1	1	3	400.00%	400.00%	66.67%	18	12	10	13	50.00%	80.00%	38.46%
Criminal Damage	0	1	0	0	-100.00%	0.00%	0.00%	1	3	10	6	-66.67%	-90.00%	-83.33%
Criminal Trespass	0	0	2	0	0.00%	-100.00%	0.00%	0	1	7	15	-100.00%	-100.00%	-100.00%
Disorderly Conduct	0	0	1	1	0.00%	-100.00%	-100.00%	5	0	5	28	0.00%	0.00%	-82.14%
Alcohol Possession	0	0	1	0	0.00%	-100.00%	0.00%	0	0	8	4	0.00%	-100.00%	-100.00%
Alcohol Consumption	2	0	3	1	0.00%	-33.33%	100.00%	4	1	6	13	300.00%	-33.33%	-69.23%

Arrest Report

July 2021

Drug Related Offenses

	Jul 2021	Jul 2020	Jul 2016	Jul 2011	1 Year Change	5 Year Change	10 Year Change	YTD 2021	YTD 2020	YTD 2016	YTD 2011	1 Year Change	5 Year Change	10 Year Change
Cannabis	0	0	3	2	0.00%	-100.00%	-100.00%	1	1	31	27	0.00%	-96.77%	-96.30%
Controlled Substance	0	0	1	0	0.00%	-100.00%	0.00%	7	2	6	3	250.00%	16.67%	133.33%
Hypodermic Syringes	0	0	0	0	0.00%	0.00%	0.00%	0	0	0	0	0.00%	0.00%	0.00%
Drug Paraphernalia	0	0	2	3	0.00%	-100.00%	-100.00%	0	0	15	15	0.00%	-100.00%	-100.00%
Methamphetamine	0	0	0	0	0.00%	0.00%	0.00%	0	0	0	0	0.00%	0.00%	0.00%

Adult / Juvenile

	Jul 2021	Jul 2020	Jul 2016	Jul 2011	1 Year Change	5 Year Change	10 Year Change	YTD 2021	YTD 2020	YTD 2016	YTD 2011	1 Year Change	5 Year Change	10 Year Change
Adult	32	13	18	18	146.15%	77.78%	77.78%	149	62	271	152	140.32%	-45.02%	-1.97%
Juvenile	1	0	2	2	0.00%	-50.00%	-50.00%	2	1	45	59	100.00%	-95.56%	-96.61%

Warrants

	Jul 2021	Jul 2020	Jul 2016	Jul 2011	1 Year Change	5 Year Change	10 Year Change	YTD 2021	YTD 2020	YTD 2016	YTD 2011	1 Year Change	5 Year Change	10 Year Change
Served	1	4	1	4	-75.00%	0.00%	-75.00%	18	20	22	39	-10.00%	-18.18%	-53.85%

Traffic Crashes

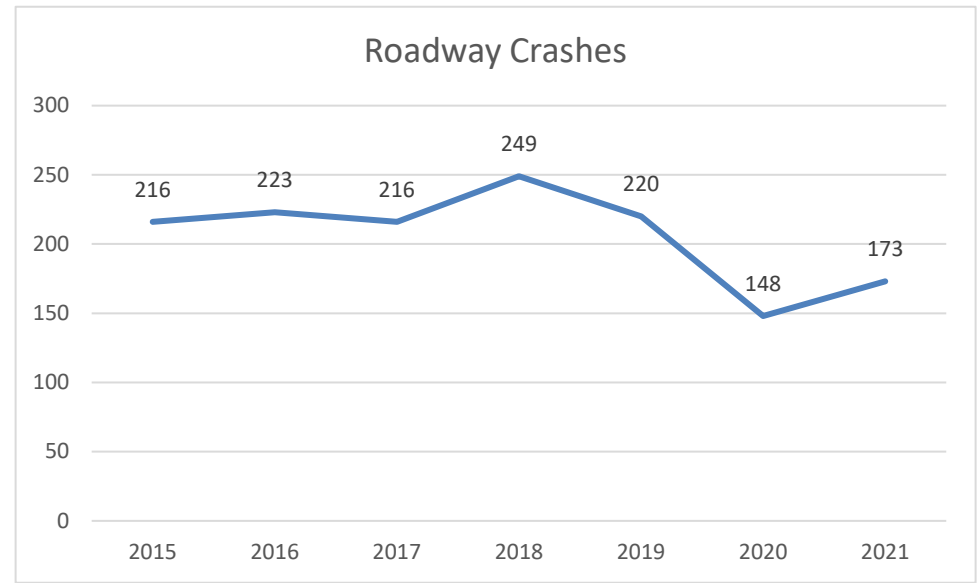
July 2021

	<u>Jul</u> <u>2021</u>	<u>Jul</u> <u>2020</u>	<u>Jul</u> <u>2016</u>	<u>1 Year</u> <u>Change</u>	<u>5 Year</u> <u>Change</u>	<u>YTD</u> <u>2021</u>	<u>YTD</u> <u>2020</u>	<u>YTD</u> <u>2016</u>	<u>1 Year</u> <u>Change</u>	<u>5 Year</u> <u>Change</u>
Private Property	15	10	15	50.0%	0.0%	94	75	120	25.3%	-21.7%
Hit & Run	6	2	3	200.0%	100.0%	21	19	23	10.5%	-8.7%
Public Way										
No Injuries	15	21	36	-28.6%	-58.3%	146	126	185	15.9%	-21.1%
Injury	6	7	3	-14.3%	100.0%	27	21	37	28.6%	-27.0%
Fatal	0	0	0	0.0%	0.0%	0	1	1	-100.0%	-100.0%
Total	21	28	39	-25.0%	-46.2%	173	148	223	16.9%	-22.4%
Fatalities	0	0	0	0.0%	0.0%	0	1	1	-100.0%	-100.0%
Hit & Run	4	1	3	300.0%	33.3%	19	19	18	0.0%	5.6%
DUI	0	2	0	-100.0%	0.0%	5	2	1	150.0%	400.0%

During COVID months there was a lot less traffic. With less traffic there is less chance of cars crashing. Traffic Crashes in 2020 dropped significantly especially in the beginning of the year. This year, year to date, compared to 2015 through 2019 shows a 21.6% decrease in the number of traffic crashes.

DUI Increase 2021

An unwelcomed trend for 2021 appears to be an increase in DUI arrests at accident scenes. Looking back on DUI arrests at the scene of an accident, discounting 2020 as an anomaly year, we have five a 150% increase. Sergeants are working on a DUI enforcement plan.



Traffic Enforcement

July 2021

	<u>Jul</u> <u>2021</u>	<u>Jul</u> <u>2020</u>	<u>Jul</u> <u>2016</u>	<u>Jul</u> <u>2011</u>	<u>1 Year</u> <u>Change</u>	<u>5 Year</u> <u>Change</u>	<u>10 Year</u> <u>Change</u>	<u>YTD</u> <u>2021</u>	<u>YTD</u> <u>2020</u>	<u>YTD</u> <u>2016</u>	<u>YTD</u> <u>2011</u>	<u>1 Year</u> <u>Change</u>	<u>5 Year</u> <u>Change</u>	<u>10 Year</u> <u>Change</u>
Traffic Stops					0.0%	0.0%	0.0%					0.0%	0.0%	0.0%
Moving Citation	173	151	56	100	14.6%	208.9%	73.0%	1058	560	502	485	88.9%	110.8%	118.1%
Moving Warning	320	399	91	153	-19.8%	251.6%	109.2%	2118	1198	640	951	76.8%	230.9%	122.7%
Total Moving	493	550	147	253	-10.4%	235.4%	94.9%	3176	1758	1142	1436	80.7%	178.1%	121.2%
Non-Moving Citation	73	89	35	137	-18.0%	108.6%	-46.7%	543	278	341	513	95.3%	59.2%	5.8%
Non-Moving Warning	203	134	50	162	51.5%	306.0%	25.3%	1451	545	487	810	166.2%	197.9%	79.1%
Total Non-Moving	276	223	85	299	23.8%	224.7%	-7.7%	1994	823	828	1323	142.3%	140.8%	50.7%
Total Citations	246	240	91	237	2.5%	170.3%	3.8%	1601	838	843	998	91.1%	89.9%	60.4%
Total Warning	523	533	141	315	-1.9%	270.9%	66.0%	3569	1743	1127	1761	104.8%	216.7%	102.7%
Total Enforcement Actions	769	773	232	552	-0.5%	231.5%	39.3%	5170	2581	1970	2759	100.3%	162.4%	87.4%
DUI Arrests	8	4	4	4	100.0%	100.0%	100.0%	42	22	23	42	90.9%	82.6%	0.0%

The number of traffic stops are grayed out because it has proven difficult to retrieve the data from the new system. However, the number of tickets both moving violations (rules of the road) and non-moving violations (e.g. license, registration, equipment, etc.) have increased.

Traffic Enforcement (continued)

July 2021

Violation Category	<u>Jul</u> <u>2021</u>	<u>Jul</u> <u>2020</u>	<u>Jul</u> <u>2016</u>	<u>Jul</u> <u>2011</u>	<u>1 Year</u> <u>Change</u>	<u>5 Year</u> <u>Change</u>	<u>10 Year</u> <u>Change</u>	<u>YTD</u> <u>2021</u>	<u>YTD</u> <u>2020</u>	<u>YTD</u> <u>2016</u>	<u>YTD</u> <u>2011</u>	<u>1 Year</u> <u>Change</u>	<u>5 Year</u> <u>Change</u>	<u>10 Year</u> <u>Change</u>
Speed	360	419	82	163	-14.1%	339.0%	120.9%	1903	1306	678	932	45.7%	180.7%	104.2%
Equipment	79	63	14	73	25.4%	464.3%	8.2%	634	241	162	375	163.1%	291.4%	69.1%
Registration	86	42	36	116	104.8%	138.9%	-25.9%	567	226	330	496	150.9%	71.8%	14.3%
Traffic Sign or Signal	66	76	30	41	-13.2%	120.0%	61.0%	445	227	257	218	96.0%	73.2%	104.1%
License	33	36	4	34	-8.3%	725.0%	-2.9%	247	101	73	131	144.6%	238.4%	88.5%
Distracted Driving	27	31	18	2	-12.9%	50.0%	1250.0%	216	113	129	7	91.2%	67.4%	2985.7%
Insurance	27	39	11	52	-30.8%	145.5%	-48.1%	215	105	113	228	104.8%	90.3%	-5.7%
Lane Violation	29	19	20	28	52.6%	45.0%	3.6%	177	74	101	146	139.2%	75.2%	21.2%
Signal	8	12	11	5	-33.3%	-27.3%	60.0%	77	48	51	55	60.4%	51.0%	40.0%
Cannabis	9	6	0	0	50.0%	0.0%	0.0%	59	22	0	0	168.2%	0.0%	0.0%
Other	3	11	1	11	-72.7%	200.0%	-72.7%	54	37	10	37	45.9%	440.0%	45.9%
Yield	9	7	3	5	28.6%	200.0%	80.0%	49	32	25	35	53.1%	96.0%	40.0%
Turning	5	8	0	3	-37.5%	0.0%	66.7%	42	26	16	19	61.5%	162.5%	121.1%
Seatbelt	5	3	1	14	66.7%	400.0%	-64.3%	19	5	12	61	280.0%	58.3%	-68.9%
Accident	0	1	0	1	-100.0%	0.0%	-100.0%	14	5	6	4	180.0%	133.3%	250.0%
Alcohol	4	0	0	2	0.0%	0.0%	100.0%	11	4	1	4	175.0%	1000.0%	175.0%
Reckless	0	0	0	0	0.0%	0.0%	0.0%	1	6	0	1	-83.3%	0.0%	0.0%
	750	773	231	550	-3.0%	224.7%	36.4%	4730	2578	1964	2749	83.5%	140.8%	72.1%