

Darien Police Department

Monthly Report



May 2026

Non-Sworn Police Personnel Appreciation

Sworn members of the Darien Police Department recognize the hard work all of our non-sworn law enforcement personnel do each and every day. Non-sworn personnel in the law enforcement field play a pivotal role in our criminal justice system by providing much-needed support, expertise, and essential services to the profession.

The Illinois Association of Chiefs of Police (ILACP) proclaimed the first full week of June, this year, June 7 through June 13th as Law Enforcement Civilian Personnel Appreciation Week. The week should be observed throughout the State as a week to honor the dedicated non-sworn personnel at law enforcement agencies.

Former ILACP President Chief Lou Jogmen said, "Given all of the incredible work being done by our civilian law enforcement employees day in and day out, it was important to me during my time as president to find a way to recognize their professionalism and their contributions to public safety. I'm grateful to the ILACP for their leadership in fulfilling this aspiration by designating this time each year where we can all honor the men and women who serve their communities with distinction as civilian law enforcement employees."

We (Darien police officers) are grateful to work alongside such wonderful people who dedicate themselves to helping us serve our community with excellence. Please join us each year in conveying our gratitude to all of the Law Enforcement Civilian Personnel who support our officers and community through their unwavering commitment and hard work.

Person Crime Summary

Offense	YTD 2026	YTD 2025	YTD 2021	1 Year % Change	5 Year % Change	Offenses Cleared	2025 % Cleared	Rate Per 100,000
Homicide Offenses	0	0	0	0.0%	0.0%	0	0.0%	0.0
Murder & Non-Negligent Manslaughter	0	0	0	0.0%	0.0%	0	0.0%	0.0
Negligent Manslaughter	0	0	0	0.0%	0.0%	0	0.0%	0.0
Justifiable Homicide (NOT A CRIME)	0	0	0	0.0%	0.0%	0	0.0%	0.0
Non-Consensual Sex Offenses	3	2	3	50.0%	0.0%	0	0.0%	13.8
Forcible Rape	1	1	1	0.0%	0.0%	0	0.0%	4.6
Forcible Sodomy	0	0	1	0.0%	-100.0%	0	0.0%	0.0
Sexual Assault with an Object	0	0	0	0.0%	0.0%	0	0.0%	0.0
Forcible Fondling	2	1	1	100.0%	100.0%	0	50.0%	9.2
Assault Offenses	70	68	34	2.9%	105.9%	21	30.0%	322.6
Aggravated Assault	2	0	0	0.0%	0.0%	0	0.0%	9.2
Simple Assault	59	59	27	0.0%	118.5%	19	2.0%	271.9
Intimidation	9	9	7	0.0%	28.6%	2	3.2%	41.5
Kidnapping	0	0	0	0.0%	0.0%	0	0.0%	0.0
Non-Forcible Sex Offenses	0	0	0	0.0%	0.0%	0	0.0%	0.0
Incest	0	0	0	0.0%	0.0%	0	0.0%	0.0
Statutory Rape	0	0	0	0.0%	0.0%	0	0.0%	0.0
Human Trafficking Offenses	0	0	0	0.0%	0.0%	0	0.0%	0.0
Commercial Sex Acts	0	0	0	0.0%	0.0%	0	0.0%	0.0
Involuntary Servitude	0	0	0	0.0%	0.0%	0	0.0%	0.0
Crimes Against Persons Total	73	70	37	4.3%	97.3%	21	28.8%	336.4

Property Crime Summary

Offense	YTD 2026	YTD 2025	YTD 2021	1 Year % Change	5 Year % Change	Offenses Cleared	2025 % Cleared	Rate Per 100,000
Robbery	0	0	0	0.0%	0.0%	0	0.0%	0.0
Burglary	4	7	7	-42.9%	-42.9%	2	50.0%	18.4
Theft Offenses	35	50	54	-30.0%	-35.2%	0	0.0%	161.3
Pocket Picking	0	0	0	0.0%	0.0%	0	0.0%	0.0
Purse Snatching	0	0	0	0.0%	0.0%	0	0.0%	0.0
Retail Theft	8	18	15	-55.6%	-46.7%	9	112.5%	36.9
Theft from Building	0	0	0	0.0%	0.0%	0	0.0%	0.0
Theft from Coin Operated Machine	0	0	0	0.0%	0.0%	0	0.0%	0.0
Theft from Motor Vehicle	1	6	5	-83.3%	-80.0%	0	0.0%	4.6
Theft of Motor Vehicle Parts	2	1	2	100.0%	0.0%	0	0.0%	9.2
All other Thefts	24	25	32	-4.0%	-25.0%	1	4.2%	110.6
Motor Vehicle Theft	1	2	4	-50.0%	-75.0%	0	0.0%	4.6
Arson	1	0	0	0.0%	0.0%	0	0.0%	4.6
Destruction of Property	20	23	19	-13.0%	5.3%	6	30.0%	92.2
Forgery	4	1	3	300.0%	33.3%	1	25.0%	18.4
Fraud Offense	35	46	62	-23.9%	-43.5%	0	0.0%	161.3
False Pretenses	19	23	2	-17.4%	850.0%	1	5.3%	87.6
Credit Card Fraud	2	2	3	0.0%	-33.3%	0	0.0%	9.2
Impersonation	2	4	56	-50.0%	-96.4%	2	100.0%	9.2
Welfare Fraud	0	0	0	0.0%	0.0%	0	0.0%	0.0
Wire Fraud	1	0	0	0.0%	0.0%	0	0.0%	4.6
Identity Fraud	10	17	1	-41.2%	900.0%	1	10.0%	46.1
Computer Hacking	1	0	0	0.0%	0.0%	0	0.0%	4.6
Embezzlement	0	0	0	0.0%	0.0%	0	0.0%	0.0
Extortion	0	0	1	0.0%	-100.0%	0	0.0%	0.0
Bribery	0	0	0	0.0%	0.0%	0	0.0%	0.0
Stolen Property Offenses	1	1	0	0.0%	0.0%	0	0.0%	4.6
Crimes Against Property Total	101	130	150	-22.3%	-32.7%	9	8.9%	465.5

Total Person & Property Crimes

Offense	YTD 2026	YTD 2025	YTD 2021	1 Year % Change	5 Year % Change	Offenses Cleared	2025 % Cleared	Rate Per 100,000
Crimes Against Persons Total	73	70	37	4.3%	97.3%	0	0.0%	336.4
Crimes Against Property Total	101	130	150	-22.3%	-32.7%	0	0.0%	465.5
Total Person & Property Crimes	174	200	187	-13.0%	-7.0%	0	0.0%	801.9

Societal Crime Summary

Offense	YTD 2026	YTD 2025	YTD 2021	1 Year % Change	5 Year % Change	Offenses Cleared	2025 % Cleared	Rate Per 100,000
Drug Violations	22	13	55	69.2%	-60.0%	5	22.7%	101.4
Drug Equipment Violations	3	1	0	200.0%	0.0%	0	0.0%	13.8
Gambling Offenses	0	0	0	0.0%	0.0%	0	0.0%	0.0
Pornography	2	0	4	0.0%	-50.0%	0	0.0%	9.2
Prostitution	0	0	0	0.0%	0.0%	0	0.0%	0.0
Weapons Law Violation	2	4	0	-50.0%	0.0%	3	150.0%	9.2
Animal Cruelty	1	0	0	0.0%	0.0%	0	0.0%	4.6
Crimes Against Society Total	30	18	59	66.7%	-49.2%	8	26.7%	138.3
Total Group "A" Offenses	204	218	246	-6.4%	-17.1%	8	3.9%	940.2

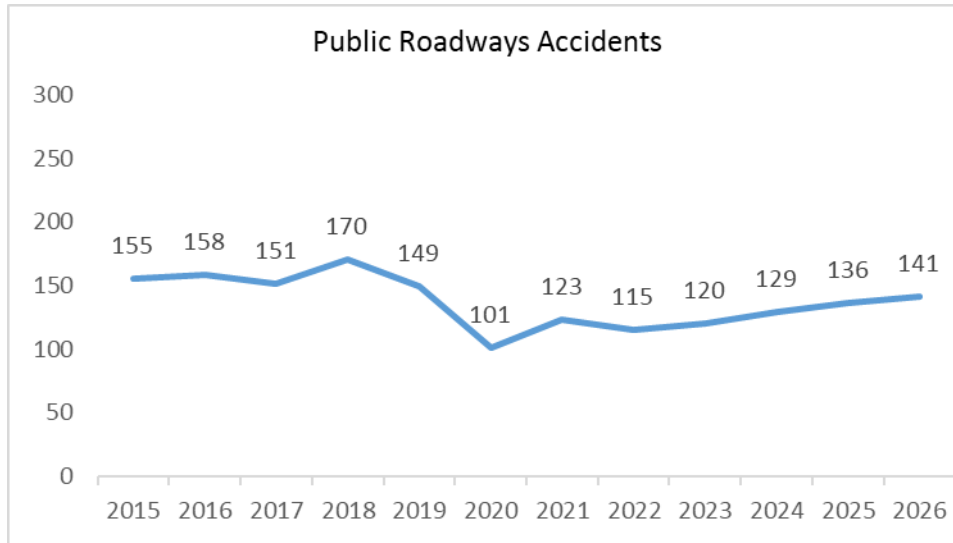
Other Crime Summary

Offense	YTD 2026	YTD 2025	YTD 2021	1 Year % Change	5 Year % Change	Offenses Cleared	2025 % Cleared	Rate Per 100,000
Bad Checks	0	0	0	0.0%	0.0%	0	0.0%	0.0
Curfew	0	0	0	0.0%	0.0%	0	0.0%	0.0
Disorderly Conduct	27	41	17	-34.1%	58.8%	8	29.6%	124.4
DUI	28	23	35	21.7%	-20.0%	13	46.4%	129.0
Family Offenses (Non-Violent)	2	2	7	0.0%	-71.4%	1	50.0%	9.2
Liquor Law Violation	9	7	7	28.6%	28.6%	6	66.7%	41.5
Peeping Tom	0	0	0	0.0%	0.0%	0	0.0%	0.0
MRAI	0	0	1	0.0%	-100.0%	0	0.0%	0.0
Trespass	10	13	7	-23.1%	42.9%	5	50.0%	46.1
All Other Crimes	49	56	94	-12.5%	-47.9%	30	61.2%	225.8
Total Group B Offenses	125	142	168	-12.0%	-25.6%	63	50.4%	576.1

Traffic Crash Summary

	YTD 2026	YTD 2025	YTD 2021	YTD 2016	1 Year Change	5 Year Change	10 Year Change
Private Property	65	46	65	85	41.3%	0.0%	30.8%
	YTD 2026	YTD 2025	YTD 2021	YTD 2016	1 Year Change	5 Year Change	10 Year Change
Public Way							
No Injuries	125	121	105	130	3.3%	19.0%	4.0%
Injury	16	14	18	27	14.3%	-11.1%	68.8%
Fatal	0	0	0	0	0.0%	0.0%	0.0%
Total	141	135	123	157	4.4%	14.6%	11.3%
	YTD 2026	YTD 2025	YTD 2021	YTD 2016	1 Year Change	5 Year Change	10 Year Change
Fatalities	0	1	0	1	-100.0%	0.0%	0.0%
Hit & Run	12	13	12	11	-7.7%	0.0%	-8.3%
DUI	2	1	4	1	100.0%	-50.0%	-50.0%

Year to Date Crashes



Calls for Service Summary

Citizen Generated Events (Beat & Hour of Day)

	<u>YTD</u> <u>2026</u>	<u>YTD</u> <u>2025</u>	<u>YTD</u> <u>2021</u>	<u>YTD</u> <u>2016</u>	<u>1 Year</u> <u>Change</u>	<u>5 Year</u> <u>Change</u>	<u>10 Year</u> <u>Change</u>
Location							
Beat 1	25.8%	22.3%	23.1%	32.6%	15.7%	11.9%	-20.7%
Beat 2	19.2%	19.8%	21.4%	27.1%	-3.2%	-10.3%	-29.4%
Beat 3	35.1%	38.9%	36.3%	39.0%	-9.7%	-3.2%	-10.0%
Out of Town	0.4%	0.5%	0.3%	1.3%	-22.2%	35.5%	-67.4%
Hour of Day							
0600	46	37	42	46	24.3%	9.5%	0.0%
0700	80	71	72	91	12.7%	11.1%	-12.1%
0800	86	104	114	133	-17.3%	-24.6%	-35.3%
0900	130	118	123	117	10.2%	5.7%	11.1%
1000	164	146	146	179	12.3%	12.3%	-8.4%
1100	175	136	134	176	28.7%	30.6%	-0.6%
1200	166	159	154	184	4.4%	7.8%	-9.8%
1300	175	171	185	216	2.3%	-5.4%	-19.0%
1400	176	203	164	217	-13.3%	7.3%	-18.9%
1500	190	185	180	214	2.7%	5.6%	-11.2%
1600	210	203	165	197	3.4%	27.3%	6.6%
1700	182	205	168	210	-11.2%	8.3%	-13.3%
Shift 1	1780	1738	1647	1980	2.4%	8.1%	-10.1%
1800	188	146	150	196	28.8%	25.3%	-4.1%
1900	151	159	113	153	-5.0%	33.6%	-1.3%
2000	113	146	105	147	-22.6%	7.6%	-23.1%
2100	124	121	98	120	2.5%	26.5%	3.3%
2200	108	104	83	109	3.8%	30.1%	-0.9%
2300	73	71	80	86	2.8%	-8.8%	-15.1%
0000	74	63	82	46	17.5%	-9.8%	60.9%
0100	55	58	50	46	-5.2%	10.0%	19.6%
0200	51	52	50	49	-1.9%	2.0%	4.1%
0300	42	50	45	27	-16.0%	-6.7%	55.6%
0400	29	37	25	27	-21.6%	16.0%	7.4%
0500	43	29	25	37	48.3%	72.0%	16.2%
Shift 2	1051	1036	906	1043	1.4%	16.0%	0.8%
Total	2831	2774	2553	3023	2.1%	10.9%	-6.4%

Calls for Service Summary

Officer Initiated Events (Beat & Hour of Day)

	<u>YTD</u> <u>2026</u>	<u>YTD</u> <u>2025</u>	<u>YTD</u> <u>2021</u>	<u>YTD</u> <u>2016</u>	<u>1 Year</u> <u>Change</u>	<u>5 Year</u> <u>Change</u>	<u>10 Year</u> <u>Change</u>
Location							
Beat 1	7.8%	5.7%	7.2%	28.2%	38.0%	9.2%	-72.2%
Beat 2	5.5%	5.1%	5.0%	29.1%	8.9%	9.8%	-81.1%
Beat 3	9.6%	10.9%	10.5%	31.8%	-11.6%	-8.1%	-69.7%
Out of Town	0.8%	0.6%	1.0%	0.1%	36.2%	-21.8%	558.3%
Hour of Day							
0600	27	34	59	214	-20.6%	-54.2%	-87.4%
0700	55	106	109	562	-48.1%	-49.5%	-90.2%
0800	88	132	127	980	-33.3%	-30.7%	-91.0%
0900	95	146	128	844	-34.9%	-25.8%	-88.7%
1000	109	122	156	803	-10.7%	-30.1%	-86.4%
1100	86	144	161	661	-40.3%	-46.6%	-87.0%
1200	85	113	152	459	-24.8%	-44.1%	-81.5%
1300	85	95	168	356	-10.5%	-49.4%	-76.1%
1400	73	82	135	288	-11.0%	-45.9%	-74.7%
1500	67	82	178	393	-18.3%	-62.4%	-83.0%
1600	58	57	158	620	1.8%	-63.3%	-90.6%
1700	40	57	100	559	-29.8%	-60.0%	-92.8%
Shift 1	868	1170	1631	6739	-25.8%	-46.8%	-87.1%
1800	69	99	200	506	-30.3%	-65.5%	-86.4%
1900	98	145	352	452	-32.4%	-72.2%	-78.3%
2000	116	125	274	354	-7.2%	-57.7%	-67.2%
2100	102	117	221	388	-12.8%	-53.8%	-73.7%
2200	122	132	249	276	-7.6%	-51.0%	-55.8%
2300	117	123	228	295	-4.9%	-48.7%	-60.3%
0000	91	85	191	730	7.1%	-52.4%	-87.5%
0100	107	105	156	614	1.9%	-31.4%	-82.6%
0200	80	64	110	512	25.0%	-27.3%	-84.4%
0300	63	39	74	466	61.5%	-14.9%	-86.5%
0400	31	38	39	456	-18.4%	-20.5%	-93.2%
0500	23	13	21	299	76.9%	9.5%	-92.3%
Shift 2	1019	1085	2115	5348	-6.1%	-51.8%	-80.9%
Total	1887	2255	3746	12087	-16.3%	-49.6%	-84.4%

Traffic Enforcement Summary

	YTD 2026	YTD 2025	YTD 2021	YTD 2016	1 Yr. Change	5 Yr. Change	10 Yr. Change
Total	NA	NA	NA	NA	0.0%	0.0%	0.0%
Citations							
	YTD 2026	YTD 2025	YTD 2021	YTD 2016	1 Yr. Change	5 Yr. Change	10 Yr. Change
Moving Citation	453	341	760	319	32.8%	-40.4%	42.0%
Moving Warning	1054	869	1585	400	21.3%	-33.5%	163.5%
Total Moving	1507	1210	2345	719	24.5%	-35.7%	109.6%
Non-Moving Citation	351	264	373	141	33.0%	-5.9%	148.9%
Non-Moving Warning	558	501	929	285	11.4%	-39.9%	95.8%
Total Non-Moving	909	765	1302	426	18.8%	-30.2%	113.4%
Total Warning	1612	1370	2514	685	17.7%	-35.9%	135.3%
Total Citations	804	605	1133	460	32.9%	-29.0%	74.8%
Total Enforcement Actions	2416	1975	3647	1145	22.3%	-33.8%	111.0%

DUI Arrests							
	YTD 2026	YTD 2025	YTD 2021	YTD 2016	1 Yr. Change	5 Yr. Change	10 Yr. Change
Total	28	23	35	NA	21.7%	-20.0%	0.0%

Category							
	YTD 2026	YTD 2025	YTD 2021	YTD 2016	1 Yr. Change	5 Yr. Change	10 Yr. Change
ALCOHOL / CANNABIS	27	7	48	0	285.7%	-43.8%	0.0%
DISTRACTED	64	66	167	64	-3.0%	-61.7%	0.0%
EQUIPMENT	233	160	489	116	45.6%	-52.4%	100.9%
INSURANCE	146	115	188	64	27.0%	-22.3%	128.1%
LANE	116	65	120	55	78.5%	-3.3%	110.9%
LICENSE	97	79	182	39	22.8%	-46.7%	148.7%
OTHER	21	21	57	9	0.0%	-63.2%	133.3%
REGISTRATION	414	402	401	201	3.0%	3.2%	106.0%
SEAT BELT	9	7	8	3	28.6%	12.5%	200.0%
SIGNAL	33	30	54	29	10.0%	-38.9%	13.8%
SPEED	791	672	1556	386	17.7%	-49.2%	104.9%
STOP SIGN OR SIGNAL	394	290	314	157	35.9%	25.5%	151.0%
TURNING	38	31	33	12	22.6%	15.2%	216.7%
YIELD	33	30	30	10	10.0%	10.0%	230.0%

Citizen Concern Summary

Location	Issue	Dates Monitored	Police Response
Farmingdale Drive 75 th Street to 79 th Street	Speeding	1/10/25 - 1/24/25	25 Observations / 534 Minutes 3 Warnings / 0 Citations
Walmart Exit to Lyman 69 th Street and Wilmette Ave	Illegal Turn	2/18/26 - 3/18/26	58 Observations / 1525 Minutes 43 Warnings / 2 Citations
7900 Blk Bailey Rd	Stop Sign	3/11/26 - 4/22/26	4 Observations / 95 Minutes 2 Warnings / 0 Citations
Lakeview Dr and Oakley Dr	Speeding	3/16/26 - 4/3/26	32 Observations / 700 Minutes 8 Warnings / 4 Citations
Richmond Ave 71 st Street to 79 th Street	Illegal Pass	3/20/26 - 4/24/26	18 Observations / 510 Minutes 4 Warnings / 4 Citations
Oldfield Rd and Meyer Wood Park	Speeding	4/6/26 - 4/20/26	16 Observations / 352 Minutes 2 Warnings / 0 Citations
8300 Blk Woodland Dr	Speeding	4/13/26 - 4/27/26	15 Observations / 312 Minutes 10 Warnings / 0 Citations
	Illegal Passing	5/11/26 - 5/29/2026	10 Observations / 250 Minutes 0 Warnings / 0 Citations
Cass Ave and I-55	Speeding	5/15/26 - 5/31/26	19 Observations / 475 Minutes 4 Warnings / 8 Citations